

Tally

POWER OF SIMPLICITY



UNLOCK POSSIBILITIES

TALLY € **CALCULUS**

Why Us?

TallyCalculus is an end-to-end assessment platform for corporates, professional training organisations, educational institutes, universities, colleges and schools. The platform incorporates the best practices and latest technology to ensure a seamless experience for its users. It enables organisations and educational groups assess and evaluate the best-in-class talents, endorse and enable them for relevant career growths. Also adapting to new ways of digitization and incorporating the paperless culture will reduce organisations footprint on the environment, increase transparency, not to mention reclaim all the storage space! We want to play a small yet significant role in ensuring this sustainable environment.

We bring along:

34 YEARS OF TRUST

Tally, a brand synonym with trust and excellence. We come with our DNA built on ethics and best practices.

PROVEN TRACK RECORD

We have a proven record of providing best-in-class user experience for **more than 3 lakh tests taken across the country.**

SCALABILITY AND SECURITY

We use the most up-to-date technology and services to ensure a robust system with best-in-class data privacy.

ADAPTABILITY AND VERSATILITY

We can easily adapt to diverse infrastructure, arrangement, operation and internet speeds.

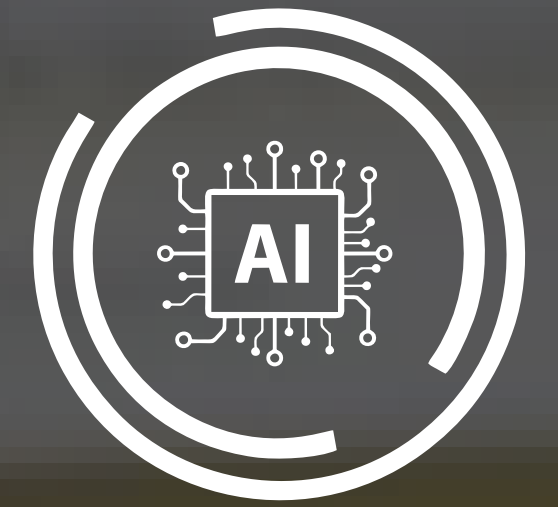
What our Platform Offers?



**QUESTION
BANK
MANAGEMENT**



**STRONG
ANALYTICS
AND REPORTING**



**AI BASED
AUTO
PROCTORING**



**POWERFUL
TEST TAKING
EXPERIENCE**



**CROSS-PLATFORM
SUPPORT**



Question Bank Management

SUPPORTS 6 TYPES OF QUESTIONS

- ↳ **Multiple Choice Questions (MCQ)**, **Multiple Multi Choice Questions (MMCQ)** and **True or False** are supported well by the platform and are auto evaluated.
- ↳ **Descriptive Type Questions** comes with the feasibility of writing and/or uploading an image or graphic.
- ↳ **Image Based Questions** allows images to be uploaded and linked to other question types like MCQ, Descriptive questions and more.
- ↳ **Case Study Based Questions** can also be created and combined with other question types like MCQ, MMCQ, Descriptive questions and more.



Question Bank Management

ENABLES BULK IMPORT QUESTIONS USING EXCEL

Various questions can be created in bulk and uploaded in the system through an excel file.

ASSISTS EASY QUESTION PAPER CREATION

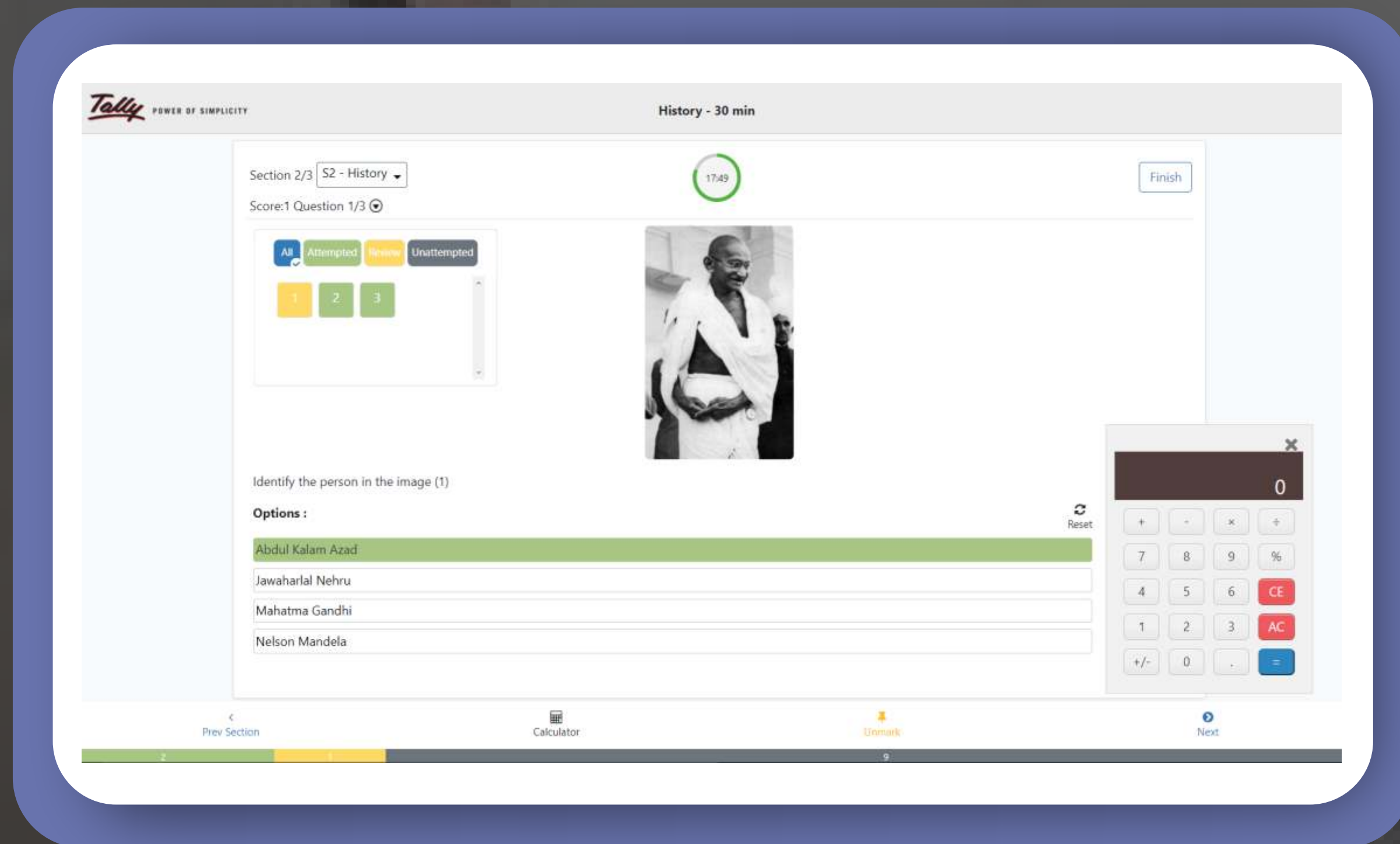
Easily creates question papers from the pool of questions and defines rules, marks, difficulty levels, topic hierarchy based on various certifications or courses.

EMPOWERS MINIMAL EVALUATION WORK

The platform comes with an in-built evaluation system. Once the test is completed, most of the questions are auto evaluated and marks are awarded.



Powerful Test Taking Experience



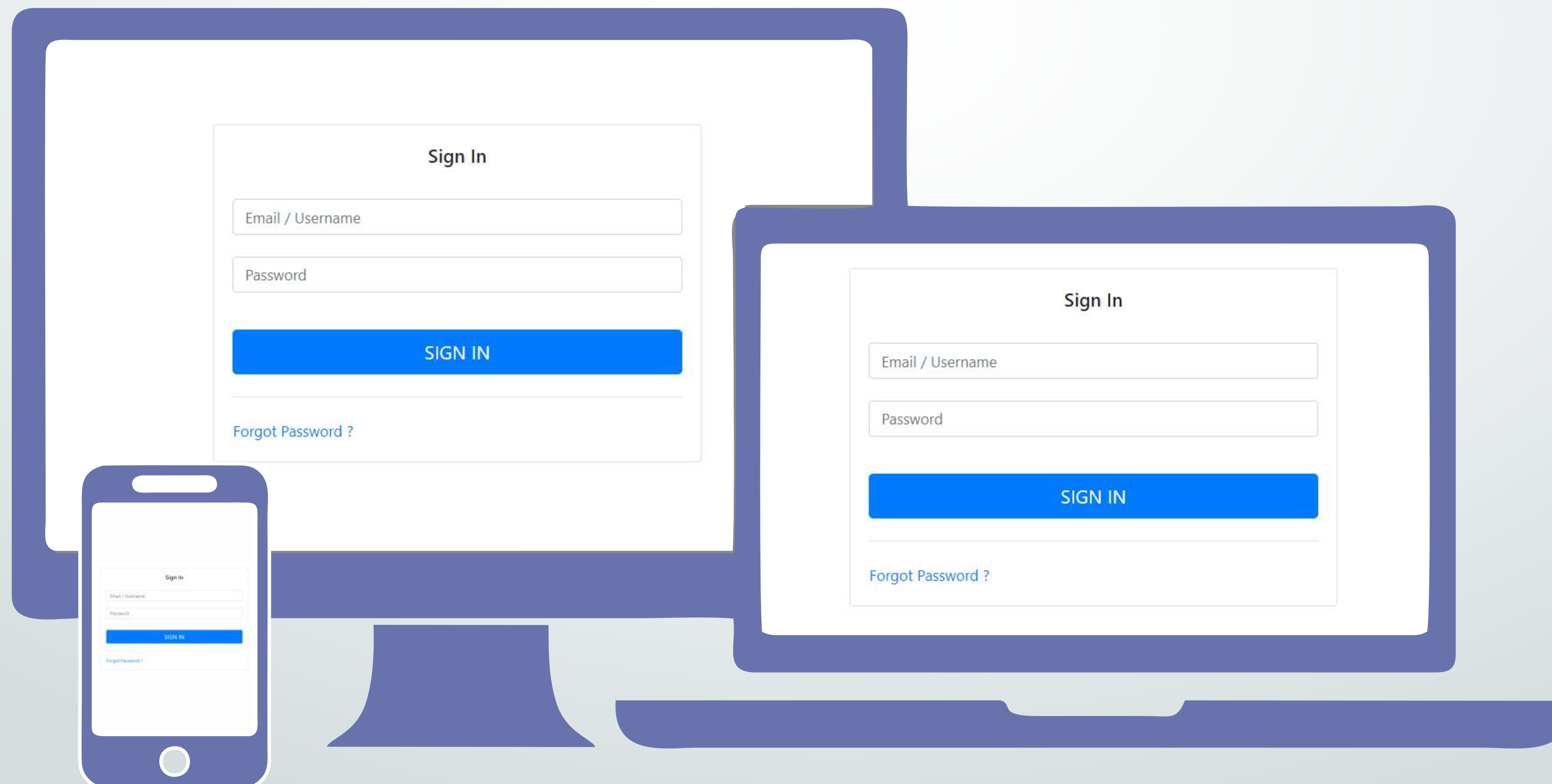
- **Countdown Timer** indicates the time remaining for the candidate to end the test.
- **Section Pallet** enables moving across sections easily.
- **Question Pallet** provides easy navigation to other questions with colour codes to filter attempted/attempted/review/un-attempted questions.
- **Quick Access Toolbar** consists of the below features:

- **Next/Previous Navigation** to move to the next or the previous question.
- **Mark for Review** allows a question to be marked for rechecking/reviewing before the test ends.
- **Bottom Status Bar** with colour codes gives a quick glance at the test as one progresses.
- And **Onscreen-Draggable-Calculator**.



CROSS-PLATFORM SUPPORT

➤ Assessment can be conducted from anywhere, anyhow on a Desktop, Laptop and Mobile with minimal support.





Strong Analytics and Reporting

Powerful Post-test Analytics

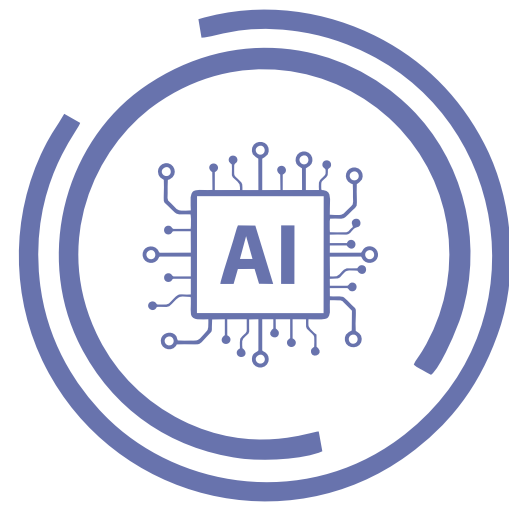
A complete analysis is possible right from questionnaire, to topic, to percentage, to student including the entire batch and their performance.

Strong Decision Making

Strong decision-making is feasible from the data provided by the platform on the questions, students, the environment and the facilities provided.

Easy Reporting

All the reports and data available in the system can be exported in a PDF and Excel format.



AI Based Auto Proctoring

The screenshot displays a proctoring interface with the following details:

- Candidate Email:** kaushik.a@tallysolutions.com
- Test Name:** TallyGURU 6.3
- Proctoring Type:** Image and Web Proctored
- Test Duration:** 113 min(s) 4 sec(s)/120 min(s)
- Test Score:** 83/120.0
- Audit Recommended:** (Red button)
- Violation Summary:**
 - Total Violation Count : 6
 - Total Violation Duration : 4 min(s)
- Activity Timeline:**
 - 09-Mar-2020,19:52: Test started
 - 09-Mar-2020,19:52: Moved Out of Test Window - 1 min(s)
 - 09-Mar-2020,19:54: No person detected - 5 sec(s)
 - 09-Mar-2020,19:54: Multiple people detected - 12 sec(s)
 - 09-Mar-2020,19:54: Moved Out of Test Window - 2 min(s)
 - 09-Mar-2020,19:54: Multiple people detected - 43 sec(s)
 - 09-Mar-2020,19:55: Multiple people detected - 5 sec(s)
 - 09-Mar-2020,19:56: Test Ended - Browsing Tolerance Exceeded

- **Analysis of Detailed Audit Log** of the exam ensures detection of any malpractice.
- **AI-driven Auto Proctoring** assists large scale exams.

- **Remote Proctoring** supported by capturing images and recording of the exam.
- Auto Proctoring **eliminates physical exam invigilation.**

Tally Education

Tally Education Pvt. Ltd., is a group company and an education initiative of Tally Solutions, the makers of the popular Tally software. It is the only entity authorized to issue certifications on Computerized Accounting and Tally. It has been incorporated with a vision to enable businesses to manage their manpower requirements by offering simple and easy solutions to find suitable skilled resources for their businesses.

For a DEMO and more details on TallyCalculus, write to info@tallysolutions.com

Tally Education Pvt. Ltd.
No.23-24, AMR Tech Park II B, Hongasandra, Hosur Main Road,
Bengaluru – 560068, Karnataka, India.
Website: www.tallyeducation.com